

SAPGUI 7.20C1 Installation

FACULTY INSTALLATION DOCUMENT!!!

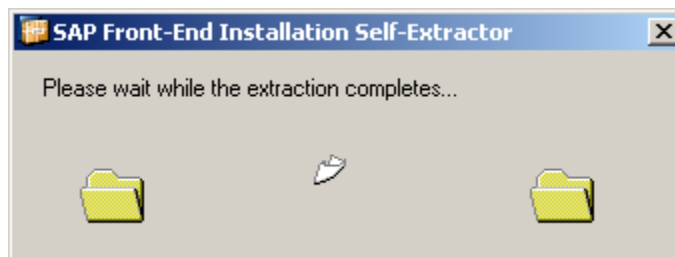
Purpose: Installation of SAPGUI for use with the UW-Milwaukee UCC hosting center. The installer file 'SAPGUI720Cx.EXE' will install the latest version of SAPGUI (including BEX tools, KW tools, and relevant patches) and our saplogon.ini file (needed for access to our servers). This GUI version has been tested and confirmed to be working on both 32 bit and 64 bit versions of Windows XP, Windows Vista, and Windows 7. The bare minimum requirement is 32bit Windows XP SP2 with .net 2.0 installed.

Preparation: It is **strongly recommended** that previous versions of the SAPGUI be uninstalled using the operating systems Add/Remove software option found on the control panel. It is **required** that you remove all previous versions of the saplogon.ini file. On Windows XP, this file can be found in C:\windows. On Vista and Windows 7 operating systems, you need to search for and delete all copies of this file, hidden files and folders need to be enabled in the control panel (start -> control panel -> appearance and personalization -> Folder Options – in view tab and radio button “show hidden files and folders”).

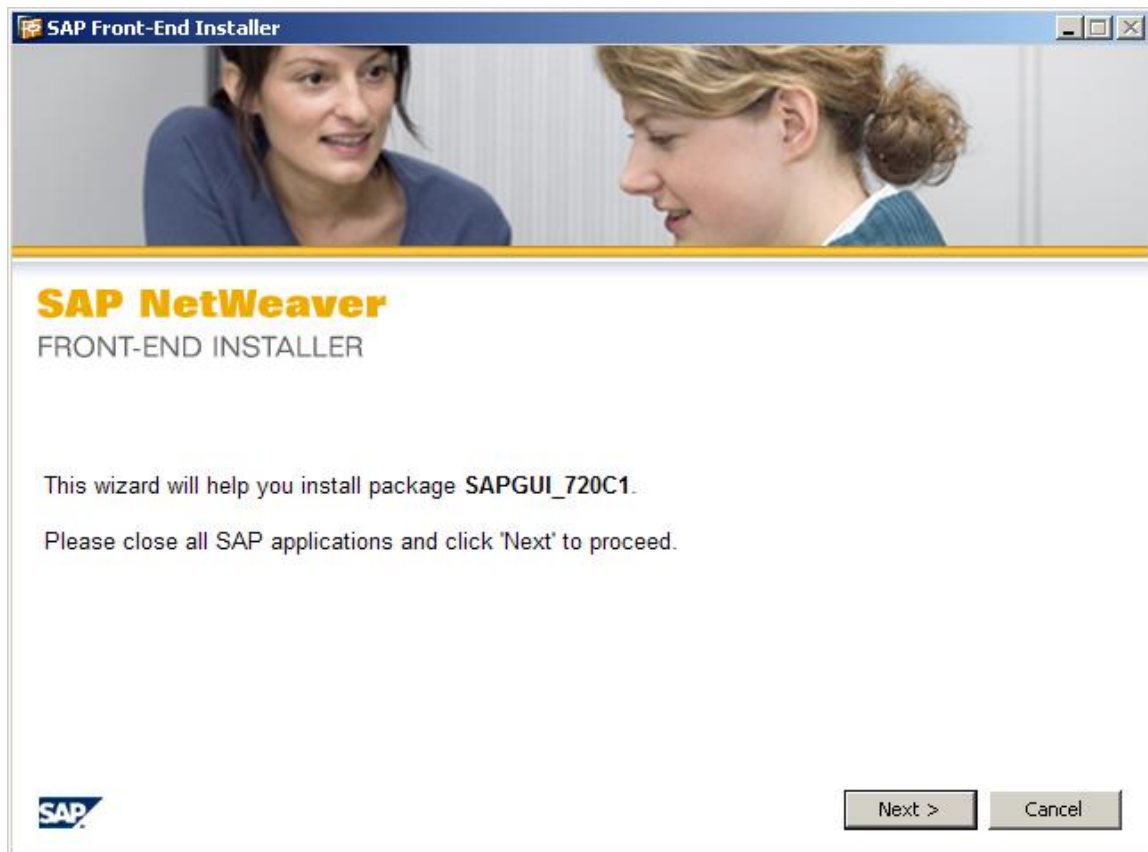
Procedure: You should have already downloaded the SAPGUI installer program from our website at <http://ucc.uwm.edu> . If you have not already done so, please do this now. Once you have the installer program, execute it by double clicking this icon:



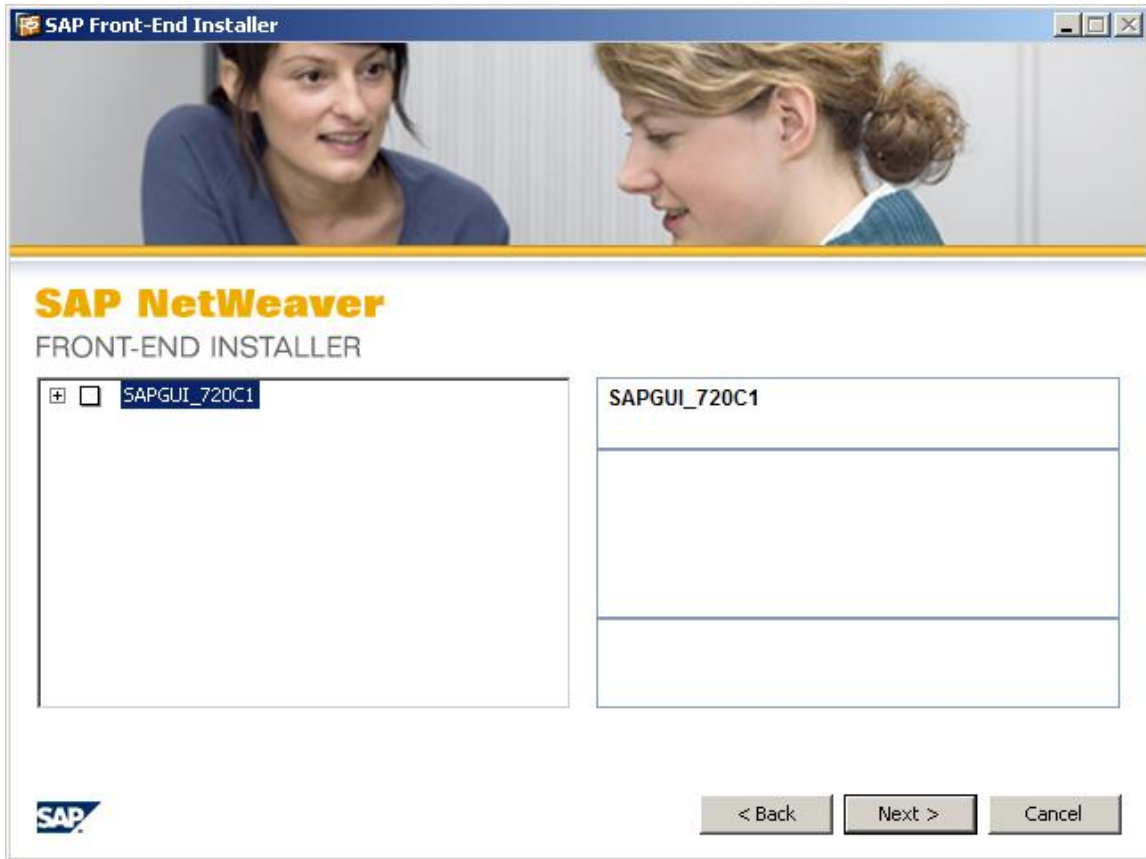
This will bring up SAP's extraction notification, which depending on your machine can run for a few minutes.



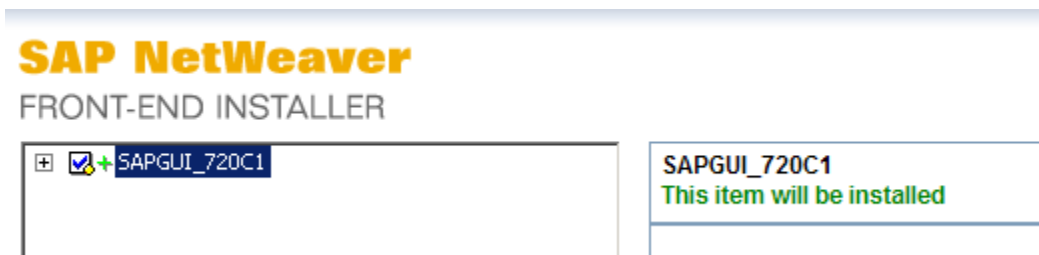
Once the extraction is complete, you will be presented with the following window.



Press the next button to get the screen below:

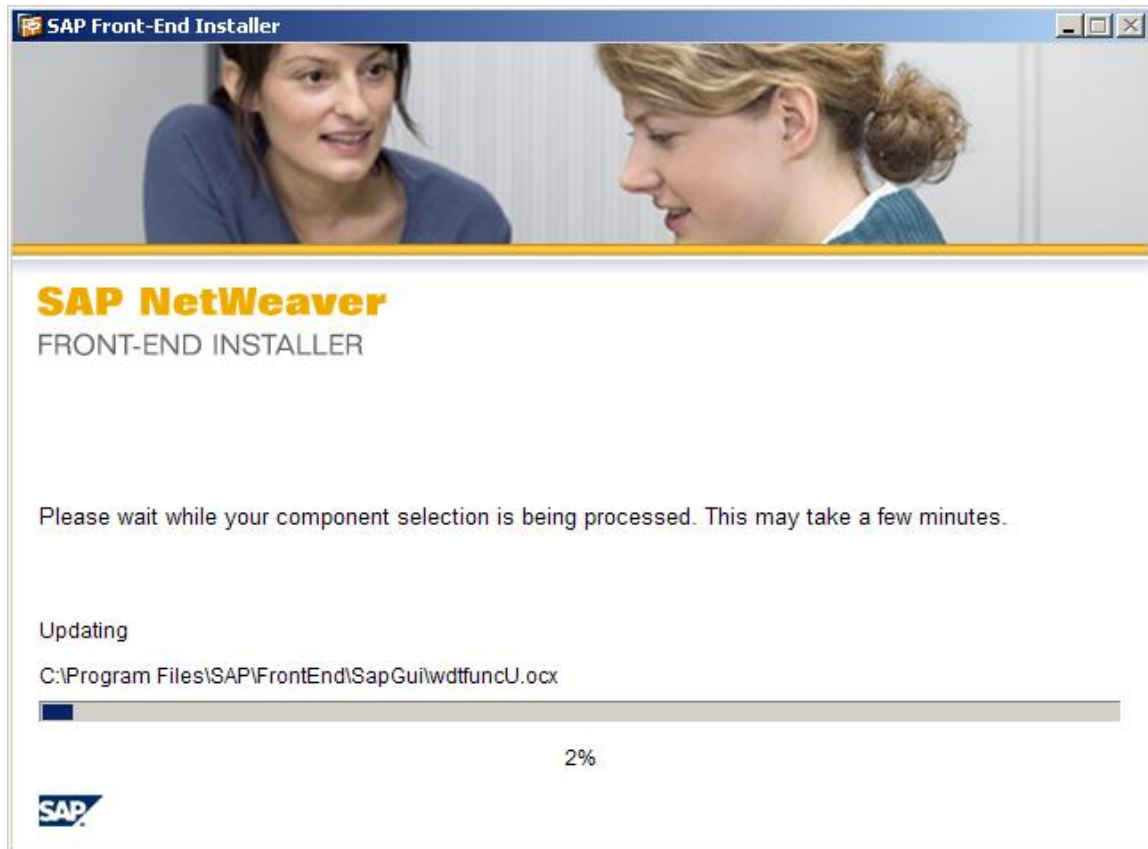


On this screen, please check the empty box on the left side of the window so that it looks like this:

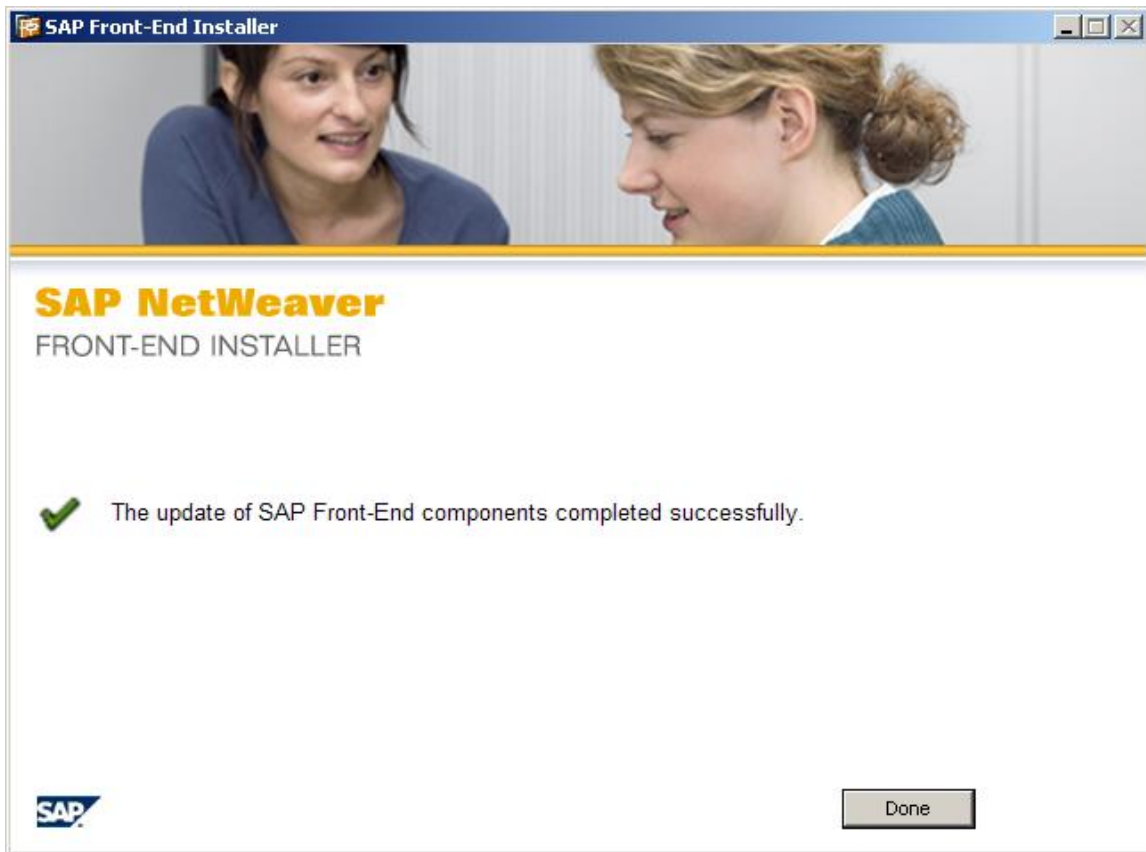


Press the next button.

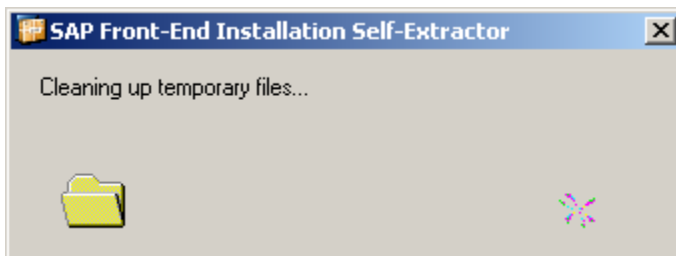
Your computer should now be installing SAPGUI, you will see the progress bar move along as the installation progresses:



After a few minutes, the installer will complete. Please press the 'Done' button

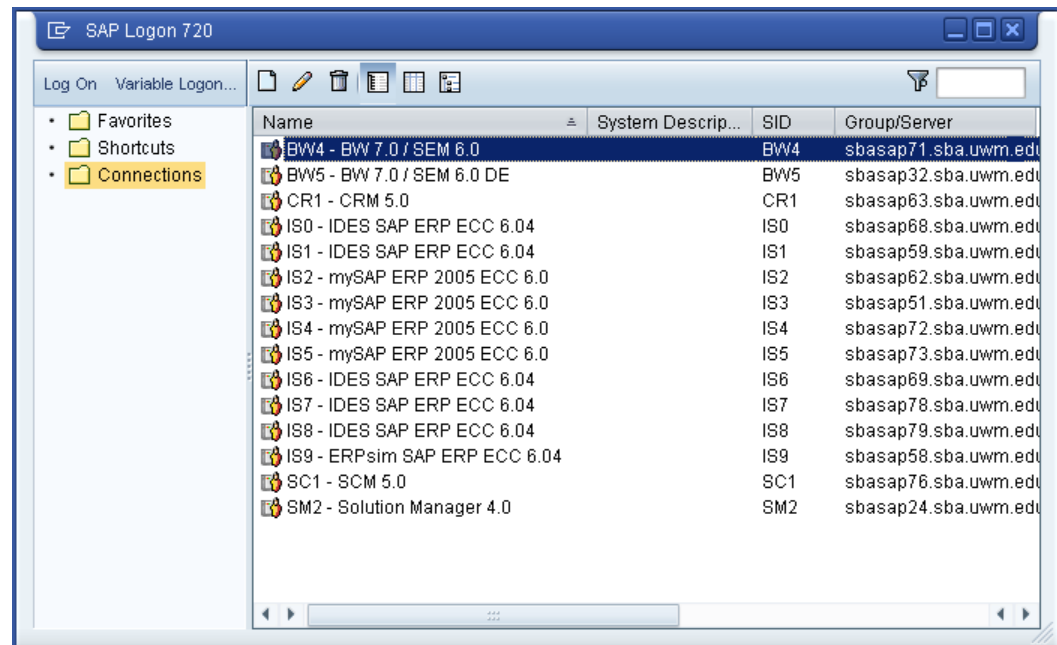


At that time, the window below will perform some clean up functions and your install should be complete.



Confirmation: Although it is not required, you should **REBOOT** your computer at this time. This allows any pending registry entries to finalize and the temp files to clear out. You should then have two new menu items in your start menu -> programs area. 'Business Explorer' and 'SAP Front End'.

To make sure our front end installed correctly, please open the program 'SAP Logon' from start menu -> programs -> SAP Front end. You should see the screen below:



If you are unable to get to this point, please go to <http://ucc.uwm.edu> and open a help ticket.

If you need to keep your current saplogon.ini file for other servers, please manually add our server information from our saplogon.ini file or give our saplogon.ini to your IT department and request they add it for you.